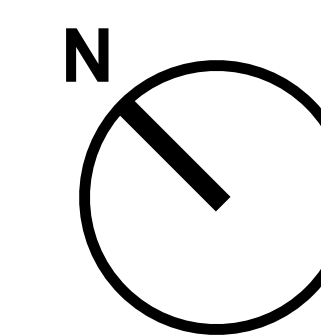
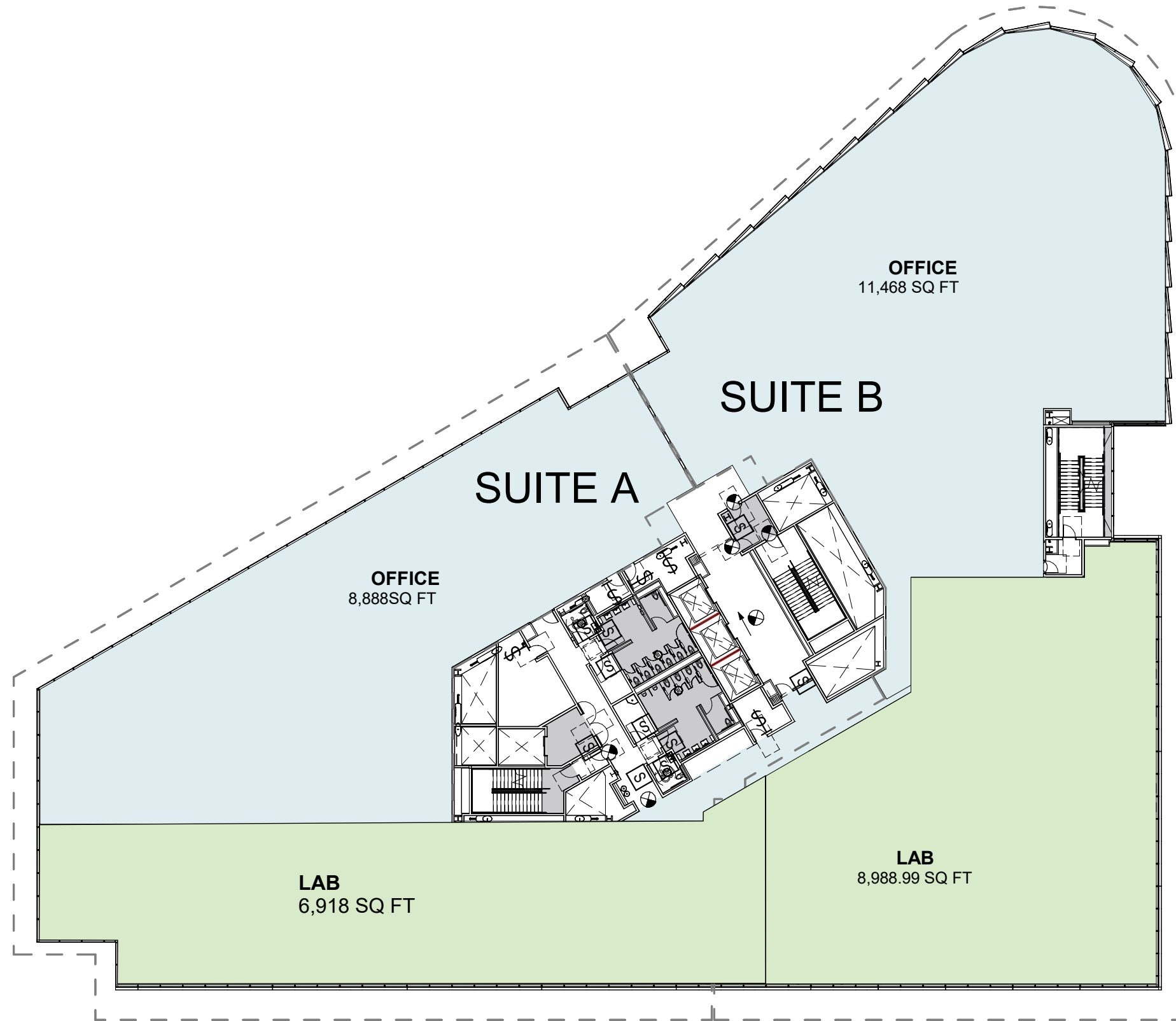


- Ⓐ LOADING DOCK
- Ⓑ OUTDOOR PLAZA
- Ⓒ CAFE
- Ⓓ GYM
- Ⓔ LOBBY





LEGEND

- BUILDING SUPPORT
- STAIRS/ ELEV
- LOBBY/ RECEPTION
- CONFERENCE
- BREAK ROOM
- OFFICE
- OPEN OFFICE
- LAB
- LAB SUPPORT

SUITE A:
15,806 SQ FT

LAB
6,918 SQ FT 43%

OFFICE
8,888 SQ FT 57%

SUITE B:
19,789 SQ FT

LAB
8,321 SQ FT 42%

OFFICE
11,468 SQ FT 58%



LEGEND

- BUILDING SUPPORT
- STAIRS/ ELEV
- LOBBY/ RECEPTION
- CONFERENCE
- BREAK ROOM
- OFFICE
- OPEN OFFICE
- LAB
- LAB SUPPORT

SUITE A:

LAB

| | |
|-------------------------|-----|
| LAB BENCH (LINEAR FEET) | 456 |
| LAB COLLAB | 8 |

OFFICE

| | |
|--------------------------|----|
| WORK STATIONS (72" X30") | 64 |
| FLEX SPACE (~100SF) | 3 |
| CONFERENCE (~28 SEATS) | 4 |

SUITE B:

LAB

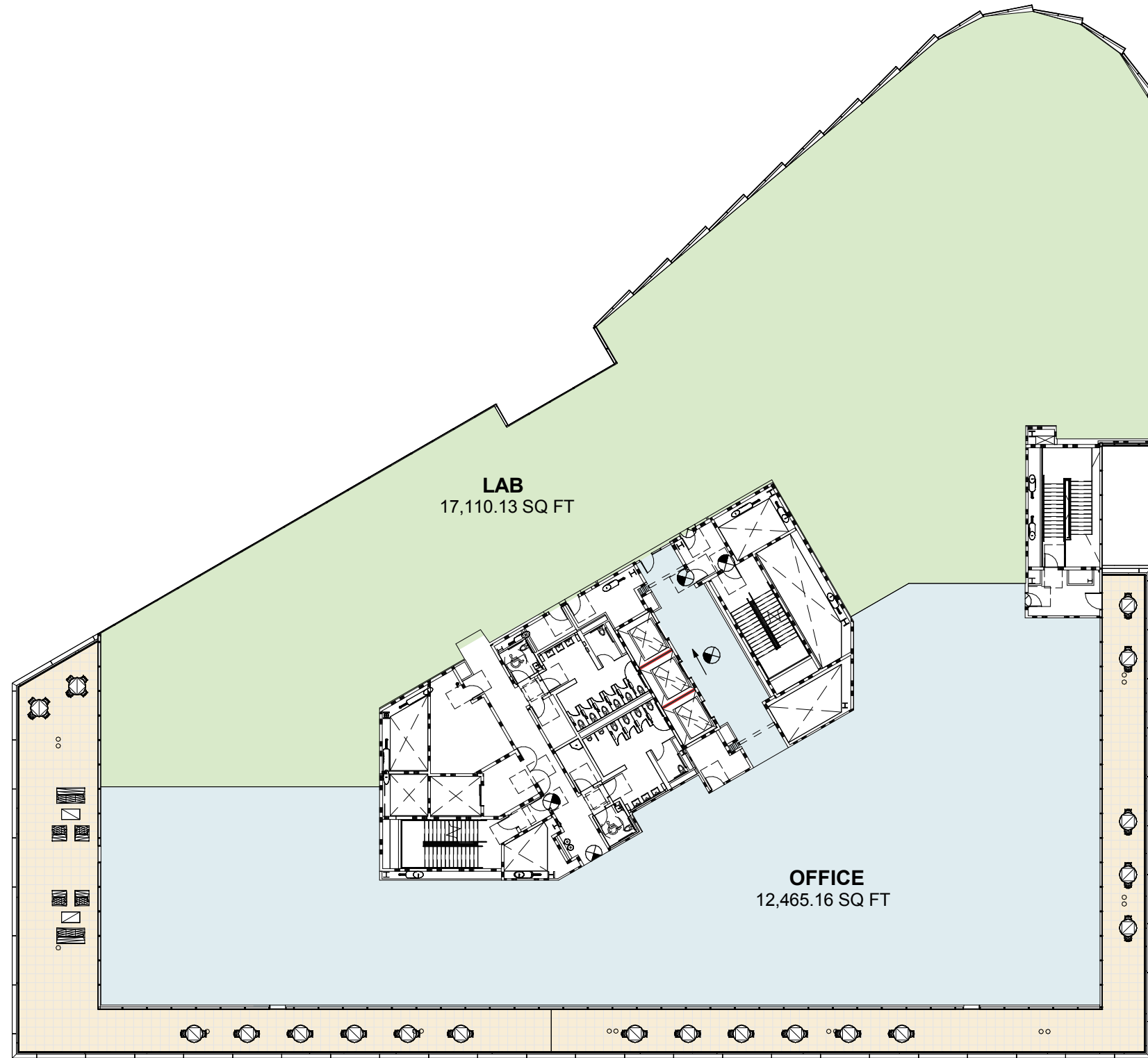
| | |
|-------------------------|-----|
| LAB BENCH (LINEAR FEET) | 540 |
|-------------------------|-----|

OFFICE

| | |
|--------------------------|----|
| WORK STATIONS (72" X30") | 86 |
| FLEX SPACE (~100SF) | 3 |
| CONFERENCE (~28 SEATS) | 5 |

LEGEND

- BUILDING SUPPORT
- STAIRS/ ELEV
- OPEN OFFICE
- LAB
- LAB SUPPORT
- BALCONY



LAB 17,110.13 SQ FT 56%

OFFICE 12,465.16 SQ FT 44%



LEGEND

- BUILDING SUPPORT
- STAIRS/ ELEV
- CONFERENCE
- BREAK ROOM
- OFFICE
- OPEN OFFICE
- LAB
- LAB SUPPORT
- BALCONY

LAB
LAB BENCH (LINEAR FEET) 1,106

OFFICE
WORK STATIONS (72" X30") 84
FLEX SPACE (~100SF) 6
CONFERENCE (~48 SEATS) 7
PHONE ROOMS 2